



The Open Orthopaedics Journal

Content list available at: <https://openorthopaedicsjournal.com>



RESEARCH ARTICLE

Early Failures of Total Knee Patients with Nickel Allergies Secondary to Carbon Fiber Debris

Gerhard Maale¹, Daniel Mohammadi^{1*} , Nicole Kennard¹ and Aniruth Srinivasaraghavan¹

¹Dallas Fort Worth Sarcoma Group, Orthopedic Oncology, United States

Abstract:

Aim:

Currently, there are not many studies on the long-term outcomes of the specific implants used in patients with metal hypersensitivities. The purpose of this study is to report a significant number of TKA revision failures with the CFR-PEEK prosthetic knee implant with an anatomic hinge.

Background:

Patients can experience multiple issues following a primary Total Knee Arthroplasty (TKA). A growing body of research is finding a correlation between primary TKA failure and metal hypersensitivity, most commonly with nickel and cobalt. Because of this, knee prosthetics are being made from hypoallergenic metals, such as zirconium nitride (ZrN), to minimize the number of failures due to metal allergy. Given the relatively new development of the hypoallergenic prostheses, there is sparse data about their overall success.

Objective:

The purpose of this study is to report a significant number of TKA revision failures with the CFR-PEEK prosthetic knee implant with an anatomic hinge.

Methods:

In this study, we analyzed the sequelae of 84 patients between May 2015 to June 2020 who received a total knee revision due to a failed primary TKA with metal hypersensitivity. These patients were revised with the rotating anatomic hinge knee system, which consisted of Carbon Fiber Reinforced Poly-Ether-Ether-Ketone (CFR-PEEK implant) coated with a ZrN, Zirconium, and Chrome Nitride multi-layer surface coating with 30% polyacrylonitrile fiber content. The patients requiring an additional revision operation presented with increasing pain that showed evidence of osteolysis on plain radiographs, CT imaging, positive indium labeled WBC scans and increased uptake on bone scan. Intraoperatively, an open incisional biopsy of the surgical bed was obtained, followed by radical debridement and implantation of porex knee prosthesis. In addition, intraoperative findings included black debris that grossly stained the surrounding synovial tissue black, indicative of wear and debris from carbon fiber bearings and the anatomic hinge. Histology of the intraoperative biopsy showed the accumulation of black debris in the histiocyte, fibrosis, and perivascular cuffing of lymphocytes and multinucleated giant cells stained with black debris.

Results:

Of the 84 patients, 22 failed, requiring an additional revision procedure, equating to a 26 percent failure rate of the CFR-PEEK implant, averaging 25 months to failure.

Conclusion:

This study was meant to report the extremely high failure rate of the anatomic hinge secondary to carbon fiber debris. Perhaps carbon fiber-laden implants are not as good an option for total knee revision prosthesis because of the high failure rate compared to those with polyethylene in their hinge mechanism.

Keywords: Total Knee Arthroplasty (TKA), zirconium nitride (ZrN), CFR-PEEK prosthetic, polyethylene, hypoallergenic, knee implant.

Article History

Received: June 24, 2020

Revised: August 05, 2020

Accepted: August 24, 2020

1. INTRODUCTION

As the number of annual primary total knee arthroplasty (TKA) procedures grows, so will the number of TKA revision cases [1]. Current data suggest an overall patient satisfaction of 80-85% with their primary TKA, and although this leaves roughly 1 in 5 patients dissatisfied with their primary, only 5% of all primary TKAs will require a revision for failure [2, 3]. Some attribute the discrepancy between patient disappointment with primary TKA and revision rate to unreal patient expectations preoperatively, while others report inadequate post-operative management, leading to suboptimization of the implant function [4, 5]. Regardless of the etiology of primary TKA dissatisfaction rates, current guidelines exist to improve long term patient outcomes post-operatively [6]. For example, the American Association of Hip and Knee Surgeons (AAHKS) recommends annual clinical and radiographic follow-up on asymptomatic patients, assuming patients with problematic symptoms will present earlier [6]. Optimization and patient satisfaction with the primary TKA is vitally important because TKA revision procedures yield less than ideal results [7]. In comparison to a primary TKA, the survivorship of TKA revisions is as low as 60%, in addition to lower satisfaction rates and worse functional scores [7]. Although patient dissatisfaction alone is not an indication for TKA revision, indications for such revision can be classified based on acute and chronic factors [2]. Acute factors include infection, fracture, and traumatic implant failure, whereas chronic factors include indolent infection, osteolysis, significant pain, and late component loosening secondary to wear and debris [2]. Infections occur on average in 1.9% of primary knees, with that figure jumping up to 10% or more for revision TKA [19]. Incidence rates of osteolysis have been reported to be up to 21% for total knees post revision [21]. In addition to the burden of the failed TKA on patients, TKA revisions cause significant financial strain on the healthcare system [6]. The average cost of a TKA revision is 40% greater than the primary and more complex revisions cost even more [6].

There is a growing body of literature correlating patient metal hypersensitivity and problems associated with primary TKAs [8, 9]. It is estimated that 10-15% of the population has metal allergies, and of that subpopulation, nickel and cobalt are the most common sensitizers [8]. In the patient with a metal hypersensitivity, problems associated with the primary TKA appear to present similar to a periprosthetic joint infection (PJI) [10]. The problems include joint erythema, effusion, and pain with movement [10]. However, these patients will be aseptically shown by negative joint aspirate or blood sample culture and sensitivity [8]. Opportunely, Lymphocyte Transformation Testing (LTT), an *in vitro* test that measures the activated T-lymphocyte response to various metal allergens, serves as a valuable resource to accurately identify patients with metal allergies [11]. As a result of the increased incidence of metal allergies attributing to implant failure, medical device companies are starting to manufacture implants tailored to the

metal allergic population in order to avoid the necessity of revision based on metal hypersensitivity [12]. In a study by Ajwani and Charalambous (2016), they identified 15 hypoallergenic TKA systems from 13 different manufacturers. 10 of the 15 hypoallergenic TKA systems are made from cobalt chrome with a hypoallergenic coating and the other 5 are made with a combination of titanium and zirconium [20]. In order to make 10 cobalt chrome hypoallergenic systems, since cobalt is a common sensitizer, both articulating and non-articulating surfaces are superficially coated with zirconium nitride or titanium nitride with 30% polyacrylonitrile fiber content [20]. Of the 15 hypoallergenic TKA systems, 4 include a hinge component [20]. Table 1 highlights the hypoallergenic TKA systems with hinge components and the composition of the femoral and tibial components. In addition, only the CFR-PEEK implant is manufactured with carbon fiber.

Currently, there are not many studies on the long-term outcomes of the specific implants used in patients with metal hypersensitivities. The purpose of this study is to report a significant number of TKA revision failures with the CFR-PEEK prosthetic knee implant with an anatomic hinge.

2. METHODS

2.1. Study Design and Participants

This study was retrospective and case-controlled. All patients who underwent a primary TKA revision with the CFR-PEEK implant between May 2015 and June 2020 due to metal allergies were included in the study population. All patients in the study presented with nickel allergies. One of these patients also had mild reactions to aluminum, molybdenum, zirconium, and iron. Any patient presenting with problems related to the CFR-PEEK implant underwent subsequent lab testing and imaging. Patients with a clinical indication for additional revision were considered to have failed the CFR-PEEK implant. This study evaluated multiple variables. These included the overall failure rate with the CFR-PEEK implant, the reason for failure, time to failure of each implant, gender distribution, and incidence of osteolysis in cases that failed.

2.2. Description of Experiment, Treatment or Surgery

Diagnosis: Patients with the CFR-PEEK implant presented to the clinic on routine post-operative follow-up. All patients, symptomatic or not, received a thorough physical exam and x-ray imaging of the revised joint. The physical exam consisted of visualization, range of motion (ROM), and checking for an effusion testing for any abnormal ranges of motion or prosthetic defects. For those with increasing levels of pain or acute impairment in joint function, further testing with x-ray (XR), indium labeled white blood cell (WBC) scan, triple-phase bone scan, and CT imaging were ordered to evaluate for etiology. Indications for an additional revision operation included significant pain, osteolysis, component loosening, MDI, or infection. Furthermore, the intraoperative biopsy and culture and sensitivity helped guide the final diagnosis for the etiology of failure.

Surgical Procedure: Patients got an intraoperative open incisional biopsy of the knee followed by radical debridement,

* Address correspondence to this author at Dallas Fort Worth Sarcoma Group, Orthopedic Oncology, United States; Tel: 2149575429; E-mail: daniel.mohammadi@utsouthwestern.edu

including debridement of skin, subcutaneous tissue, deep tendon, muscle belly, periosteum, bone, and resection of the capsule with mobilization of the popliteal vessels and sciatic nerve, followed by definitive reconstruction with a hinge.

2.3. Description of Follow-up Routine

Patients electing for the revision were placed on antibiotics for one day and followed up post-operatively two weeks, three months, six months, and one year. After this, the patient is followed up on a yearly basis.

2.4. Statistics

The statistical analysis involved measuring the mean, range, and Fisher’s exact test of significance for variables in question. The p-value was set at 0.01.

3. RESULTS

In the patients with failed CFR-PEEK implants, XR and CT showed evidence of osteolysis at bone adjacent to the implant and cement and often, heterotopic bone in the metaphyseal areas. Figs. (1 and 5) showed pre-operative x-rays

for patients A and B, respectively. Figs. (2 and 6) show CTs for patients A and B, respectively. The bone scan shows a focal increased blood flow activity on the early and late blood pool phases of the surrounding synovium and increased uptake around the prostheses on the delayed bone phase (Fig. 3). Additionally, the WBC scan showed some increased uptake in the areas adjacent to the implant (Fig. 4). Intraoperative findings included a gross black staining, reactive hypertrophic synovium, and surrounding periosteal tissue. If there was evidence of component loosening in the tissue surrounding the implant, the bone was also stained black (Fig. 7). The black debris pigmented the synovial tissue and periosteal tissue. Pathology slides of the open biopsy of synovial and periosteal tissues were stained with hematoxylin and eosin. These demonstrated soft tissue fibrosis and mild non-specific chronic inflammation was negative for significant acute inflammation, except for the three patients with infection. The black debris was seen within histiocytes and giant cells, and there was lymphocytic perivascular cuffing in the soft tissue (Fig. 8). Figs. (9 and 10) show post-operative fixation with a hypoallergenic revision prosthetic for patients A and B, respectively.

Table 1. Available hypoallergenic hinge TKA systems.

Manufacturer	TKA System	Femoral Component	Tibial Component
B. Braun & Aesculap	Enduro	ZrN, Zirconium, CrN multi-layer alloy reinforced with Carbon Fiber Poly Ether Ether Ketone (CFR-PEEK)	ZrN, Zirconium, CrN multi-layer alloy reinforced with Carbon Fiber Poly Ether Ether Ketone (CFR-PEEK)
Smith and Nephew	Legion HK	Oxinium oxidized Zirconium alloy	Titanium alloy
Stanmore	Smiles-Hinged Prosthesis	CoCr alloy with Titanium Nitride coating	CoCr alloy with Titanium Nitride coating
Waldemar-Link	Porex	CoCrMo alloy with Titanium Niobium Nitride coating	CoCrMo alloy with Titanium Niobium Nitride coating

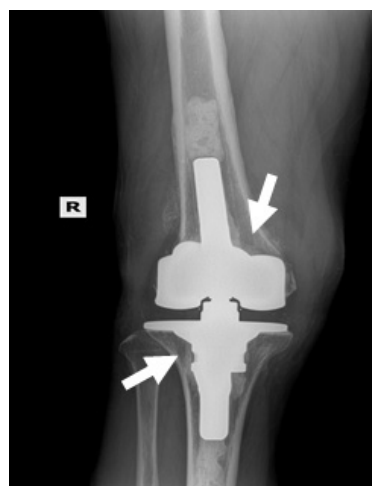


Fig. (1a). AP view; Preop XR demonstrating osteolysis on the femoral and tibial components (small white arrows) and heterotopic bone formation (large white arrows)



Fig. (1b). Lateral view; Preop XR demonstrating osteolysis on the femoral and tibial components (white arrows). Pre-operative Staging of Patient A

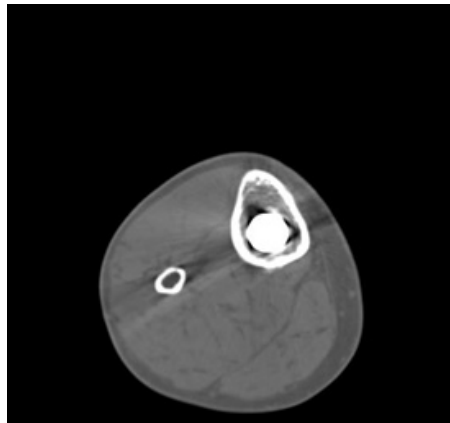


Fig. (2a). CT showing osteolysis in the tibial component (white arrows).

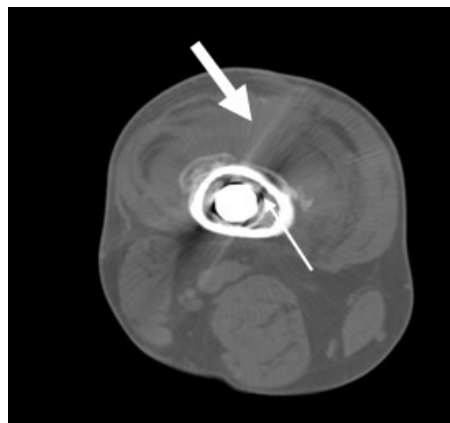


Fig. (2b). CT showing osteolysis in the femoral component (small white arrows). Heterotopic bone formation is seen on top of the femur (black arrows). Double-halo effect demonstrates a loosening pattern on the femoral component around the cement mantle with synovial hypertrophy (big white arrow).

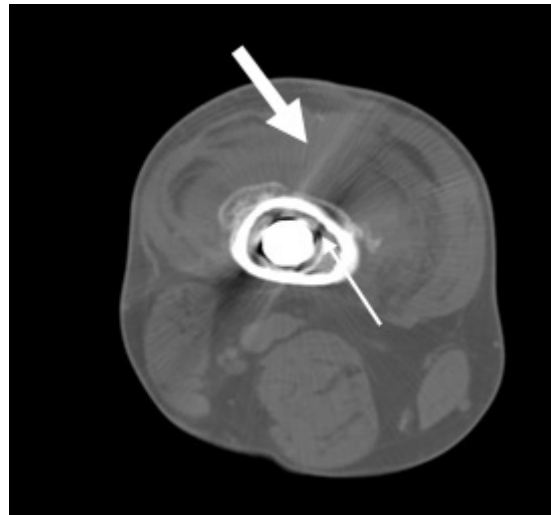


Fig. (3a). Bone scan on vascular flow phase, demonstrating radiolucency around the synovium and cement mantle, correlated with CT imagery.

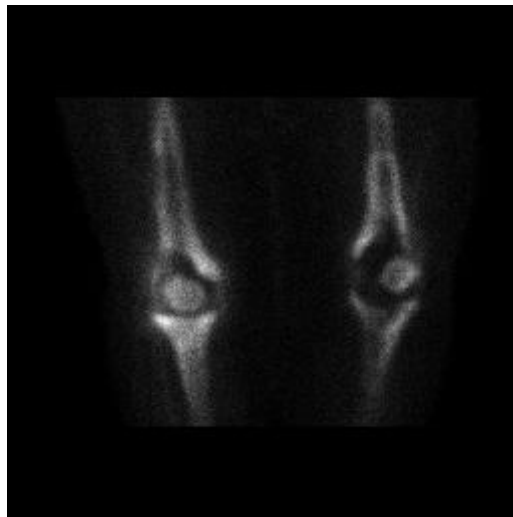


Fig. (3b). Bone scan on delayed phase, demonstrating radiolucency around the synovium and cement mantle, correlated with CT imagery.

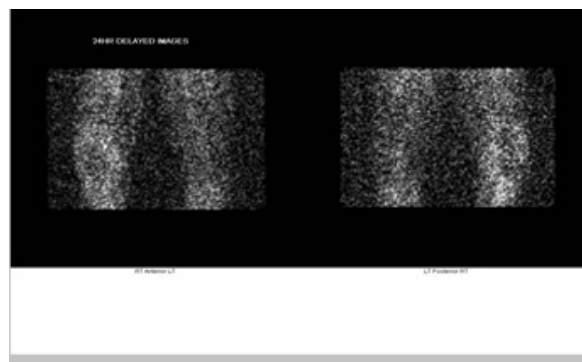


Fig. (4). Indium labeled WBC scan indicating an increase in radiotracer around the prosthesis compatible with inflammation. Pre-operative Staging of Patient B.

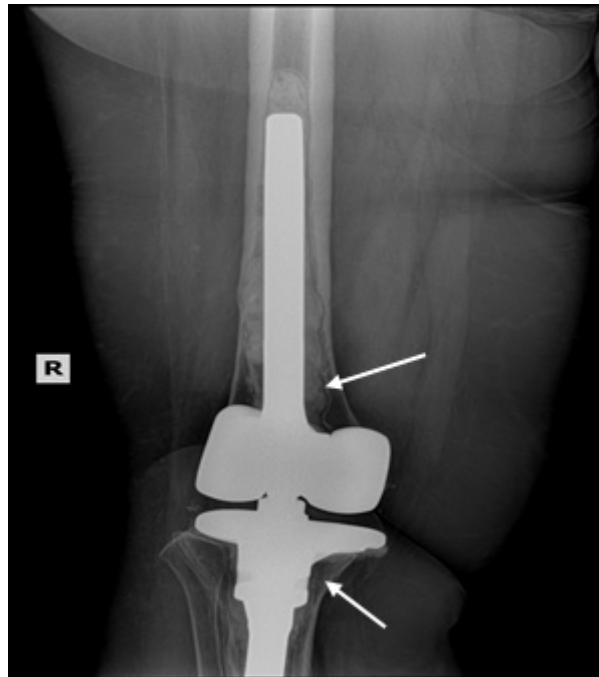


Fig. (5a). AP view; Preop XR demonstrating osteolysis on the femoral and tibial components (white arrows).

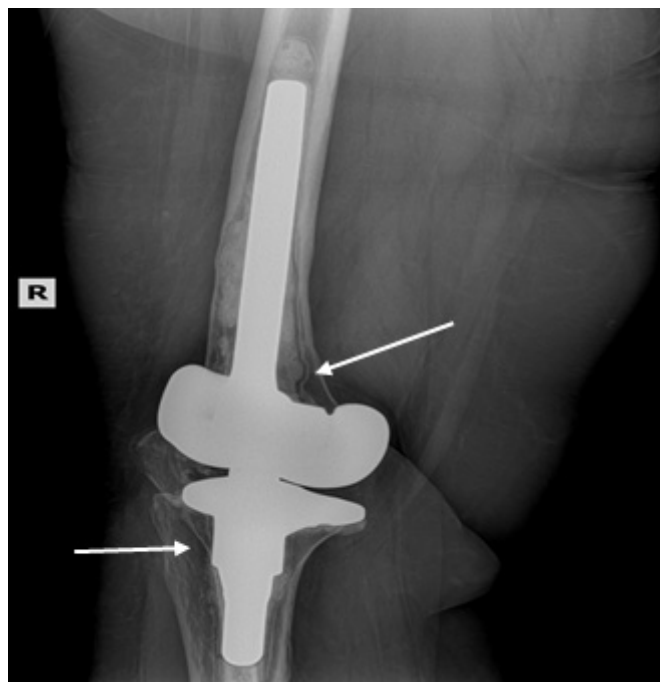


Fig. (5b). Lateral view; Preop XR demonstrating osteolysis on the femoral and tibial components (white arrows).

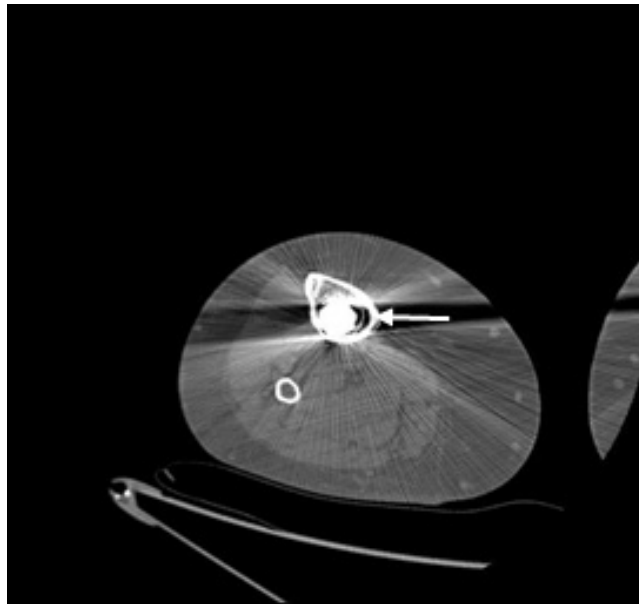


Fig. (6a). CT showing osteolysis in the tibial component (white arrow) and heterotopic bone formation.

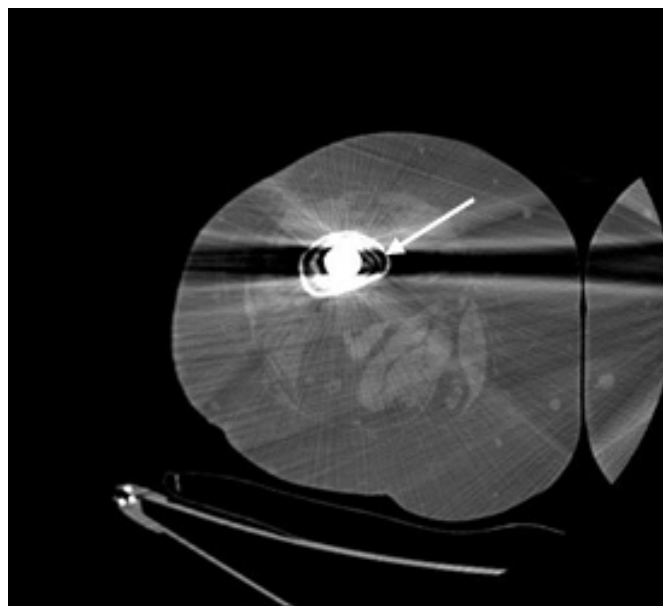


Fig. (6b). CT showing osteolysis in the femoral component (white arrow). Double-halo effect demonstrates a loosening pattern on the femur around the cement mantle with large joint effusion.

Note: WBC and Tri-Phase Bone scan not shown for patient B



Fig. (7a). Gross findings intraoperatively showing carbon fiber debris staining the periosteum tissues around the femur (white arrow).



Fig. (7b). Gross section intraoperatively showing carbon fiber debris staining the bone (white arrow).

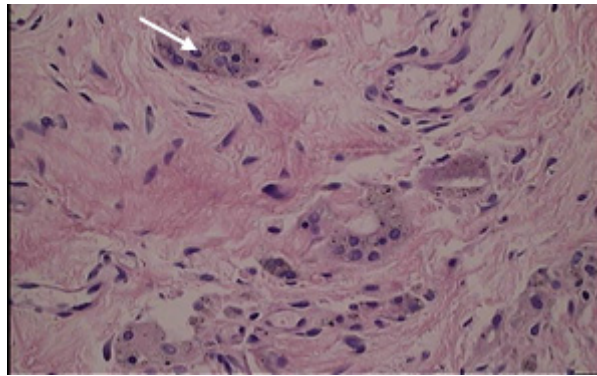


Fig. (8a). Histiocytes and foreign body multinucleated giant cells with implant debris; 400x magnification. Multinucleated giant cells indicated.*

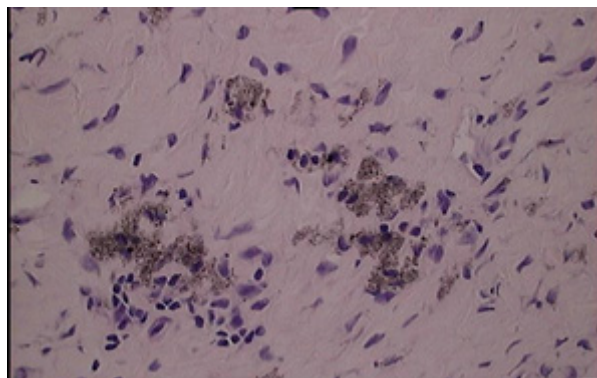


Fig. (8b). Histiocytes and foreign body multinucleated giant cells with implant debris; 400x magnification. Black debris indicated with a white arrow.*

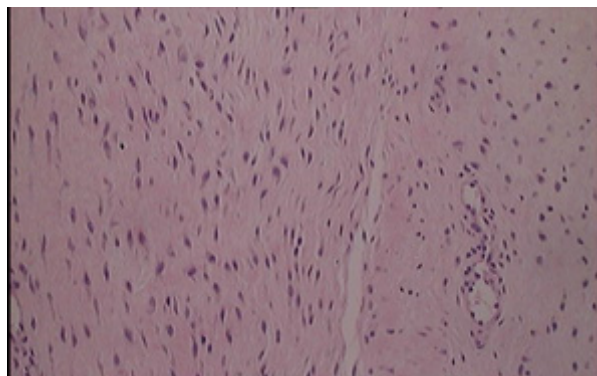


Fig. (8c). Reactive stromal fibrosis (Fibrotic Tissue); 200x magnification*

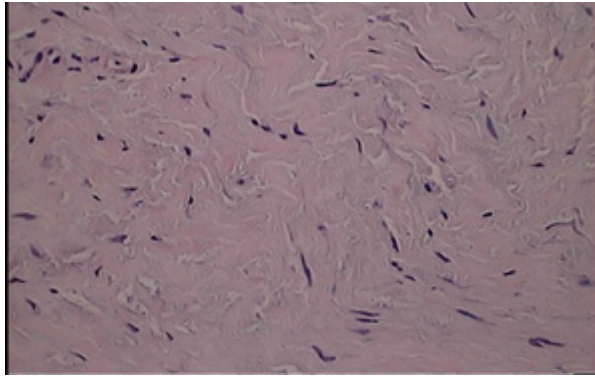


Fig. (8d). Stromal fibrosis; 400x magnification*

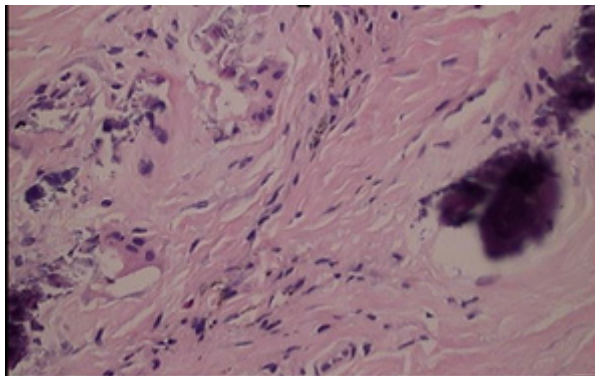


Fig. (8e). Histiocytes with the death of multinucleated giant cells and black foreign debris (white arrow); 200x magnification

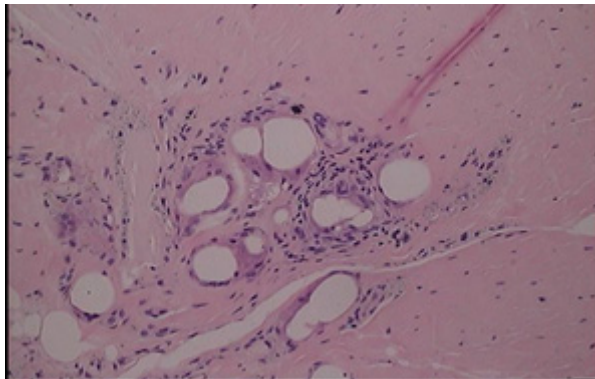


Fig. (8f). Foreign body multinucleated giant cells (black arrow); 200x magnification. Perivascular cuffing of lymphocytes in the synovium indicated (white arrow).

*Tissues stained with hematoxylin and eosin



Fig. (9a). AP view; Post-op XR for patient A after revision with niobium nitride coated implant.



Fig. (9b). Lateral view; Post-op XR for patient A after revision with niobium nitride coated implant.



Fig. (10a). AP view; Post-op XR for patient B after revision with niobium nitride coated implant.

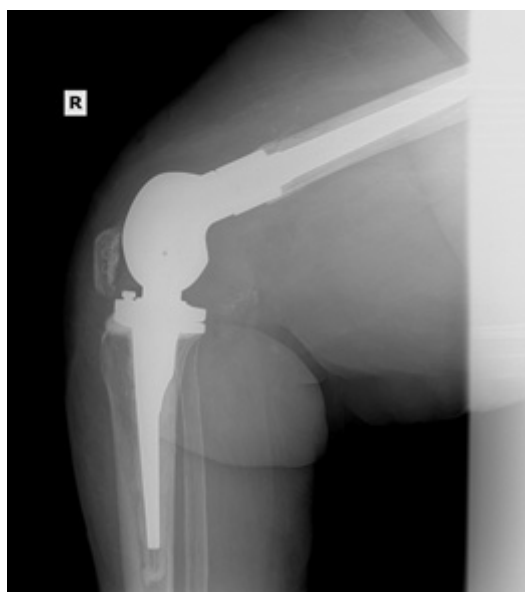


Fig. (10b). Lateral view; Post-op XR for patient B after revision with niobium nitride coated implant.

The total number of patients with a CFR-PEEK implant from May 2015 to June 2020 was 84. The patient population age ranged from 41 years to 80 years, with an average age of 61 years at the time of revision. The average time to implant failure was 25 months, with a range between 5 and 65 months. Of the 84 patients, 22 returned to us as failures, requiring an additional revision procedure, equating to a 26% failure rate of the CFR-PEEK implant. Using the primary knee revision rate in Khan et al., which quoted a 5% rate of failure, Fisher's exact test of significance comparing the CFR-PEEK failure rate and the control was performed and yielded $p < 0.0001$. 19 of the 22 failed implants had evidence of osteolysis on plain XR and CT imaging. This, compared to a previously published osteolysis

rate of 14.7% in a population of 68 patients with total knee revisions, was used for statistical analysis [22]. A Fisher's exact test of significance comparing the rate of osteolysis in our cohort versus 14.7% from Griffin et al. is 0.2994. Among the 19 implants with osteolysis, 7 had isolated femoral osteolysis and 12 had combined femoral and tibial osteolysis. Of the 22 failed implants, 19 patients were female and 3 were male. Comparing the gender distribution of the number of failed CFR-PEEK implants to the number of non-failed CFR-PEEK implants, Fisher's exact test of significance is 0.1615. Three of the 22 patients had an infection at the time of revision, as documented by histology, culture, and sensitivity. One of these patients required amputation for recurrent infection.

Additionally, one of the patients was revised at another center and histology was not available to us.

4. DISCUSSION

The failure rate of the CFR-PEEK implant in patients with revision TKAs is almost 20 times this number, with a p-value of <0.0001 [1 - 3]. This statistical significance is alarming considering the average time to failure of 25 months with the CFR-PEEK implant, given that the average lifetime of a knee implant is between 10-15 years with an annual 1% failure rate [2, 3]. During data analysis, it was also noted that the time to failure became progressively shorter as time continued after revision with another CFR-PEEK implant. This may be from the sensitivity of the patient to the CFR-PEEK, and as a result, we were quicker to recommend additional revision. However, it is also possible that the quality of the implant itself may have worsened with time. Though on a smaller scale than our study, biotribologic studies of the CFR-PEEK implant acknowledged that histological examination revealed black wear particles and grey synovium, coupled with an elevated inflammatory response, when subjected to in vitro wear simulation using a four-station servo-hydraulic knee-wear simulator [25]. Additionally, histology taken from patients with CFR-PEEK implants has demonstrated an inflammatory pattern and hypervascularity, revealing small black particles with sharp edges, larger black particles identified as carbon, and colorless grains [26]. The osteolysis rates in our population are similar to the rates seen in other published data on total knee revisions given the p-value being greater than 0.01. This shows that our particular cohort who presented with metal allergies were not predisposed to osteolysis more than other published cohorts. Although the incidence of osteolysis is similar to other published data, our average time to failure was much shorter [23]. The gender distribution of failed implants skewed towards females. When compared to the overall gender

distribution of CFR-PEEK cases, the p-value is statistically insignificant. This means that the failures of the CFR-PEEK cases are following the same gender-specific distribution as the prevalence of metal allergy necessitating a hypoallergenic implant (the total number of CFR-PEEK cases). This is in concordance with previous literature showing that implant failure due to metal allergy is female predominant [8, 13]. However, the CFR-PEEK implant was made to be hypoallergenic. It is unlikely the symptoms are from metal hypersensitivity, but due to the wear and debris of the CFR-PEEK bearings and bushings of the implant.

The patients present with problems related to their CFR-PEEK revision implant in a variety of ways. Some patients presented with complications like erythema and edema, mimicking infection, while others presented with impaired function, indicative of joint component loosening. Most of the patients in our cohort presented with MDI. All patients requiring revision reported significant pain at rest. Furthermore, the XR, CT imaging, triple-phase bone scans, and indium labeled WBC scans all showed evidence of osteolysis, component loosening, and inflammation in the tissues adjacent to the implant. Current literature has shown pain, inflammation, and component loosening as common reasons for implant failure [13 - 15]. The intraoperative findings of black debris in the tissue, from degraded carbon fiber of the CFR-PEEK implant bearing system, have also been reported in previous literature [16]. The CFR-PEEK design is included in Figure 11 for reference [27]. The carbon fiber debris of the implant has been found to lead to the component loosening and inflammation, correlating to the issues with joint function and pain/swelling experienced by the patients [1, 16]. Three cases presented with infection, however, in the researchers opinion, it is believed that bacteremia paired increased vascularity that predisposed these patients.

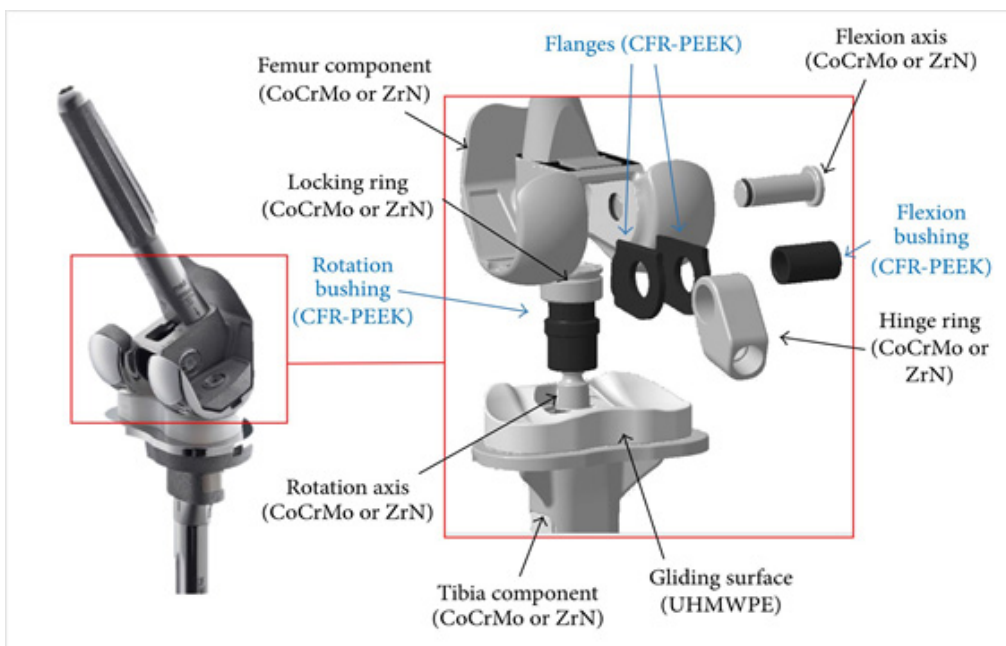


Figure 11. Zirconium nitride multi-layer alloy surface hinge implant with CFR-PEEK bushings and flanges.

Although this study reports a clear clinical significance related to the abnormally high incidence of CFR-PEEK failures, it has limitations. Firstly, there is a potential for prevalence bias [17]. Although post-operative follow-up was the same for all patients, we were not aware of the problems with the implant early on. Patients with pain or swelling were treated conservatively instead of with additional revision. It was not until years into using the CFR-PEEK implant, when the first revision was done, where the carbon fiber debris was apparent intraoperatively. As a result, the failure rate may be higher than found because more symptomatic patients who received the implant earlier on were not revised. Secondly, this study may have an attrition bias [18]. Some patients who received the implant earlier stopped attending their annual follow-ups, so if their implants also started to fail, but they did not show up, this would change the failure rate. Thirdly, three of the patients who failed with the CFR-PEEK implant also experienced a patella avulsion or problems with the patella tracking mechanism. It is unknown if the patella issues are due to the implant or not. Fourthly, three of our patients presented with a PJI, in addition to the aforementioned symptoms associated with the CFR-PEEK.

CONCLUSION

This study is meant to report the extremely high failure rate of the CFR-PEEK implant (26%), therefore physicians and patients are aware of its potential sequelae. The use of a hypoallergenic implant in patients with metal allergies is important to help patients needing a revision TKA experience the best quality of life. However, the CFR-PEEK implant, although hypoallergenic, is failing at a higher rate than reported with other implants, in a shorter amount of time.

ETHICS APPROVAL AND CONSENT TO PARTICIPATE

The Ethics Committee or institutional review board (IRB) of Medical City Plano approved this study with the approval No. 373.

HUMAN AND ANIMAL RIGHTS

No animals were used in this research. All human research procedures followed were in accordance with the ethical standards of the committee responsible for human experimentation (institutional and national), and with the Helsinki Declaration of 1975, as revised in 2013.

CONSENT FOR PUBLICATION

All patients participated on a voluntary basis and gave their informed consent.

AVAILABILITY OF DATA AND MATERIALS

Not applicable.

FUNDING

None.

CONFLICT OF INTEREST

All other authors do not have conflicts of interest to

disclose.

ACKNOWLEDGEMENTS

Declared none.

REFERENCES

- [1] Postler A, Lütznert C, Beyer F, Tille E, Lütznert J. Analysis of Total Knee Arthroplasty revision causes. *BMC Musculoskelet Disord* 2018; 19(1): 55. [<http://dx.doi.org/10.1186/s12891-018-1977-y>] [PMID: 29444666]
- [2] Hightower CD, Hightower LS, Tatman PJ, Morgan PM, Gioe T, Singh JA. How often is the office visit needed? Predicting total knee arthroplasty revision risk using pain/function scores. *BMC Health Serv Res* 2016; 16(1): 429. [<http://dx.doi.org/10.1186/s12913-016-1669-y>] [PMID: 27553056]
- [3] Khan M, Osman K, Green G, Haddad FS. The epidemiology of failure in total knee arthroplasty: avoiding your next revision. *Bone Joint J* 2016; 98-B(1)(Suppl. A): 105-12. [<http://dx.doi.org/10.1302/0301-620X.98B1.36293>] [PMID: 26733654]
- [4] Adravanti P, Vasta S. Varus-valgus constrained implants in total knee arthroplasty: indications and technique. *Acta Biomed* 2017; 88(2S): 112-7. [<http://dx.doi.org/10.23750/abm.v88i2-S.6521>] [PMID: 28657572]
- [5] Mulhall KJ, Ghomrawi HM, Bershady B, Saleh KJ. Functional improvement after total knee arthroplasty revision: new observations on the dimensional nature of outcome. *J Orthop Surg Res* 2007; 2: 25. [<http://dx.doi.org/10.1186/1749-799X-2-25>] [PMID: 18062822]
- [6] Teeny SM, York SC, Mesko JW, Rea RE. Long-term follow-up care recommendations after total hip and knee arthroplasty: results of the American Association of Hip and Knee Surgeons' member survey. *J Arthroplasty* 2003; 18(8): 954-62. [<http://dx.doi.org/10.1016/j.arth.2003.09.001>] [PMID: 14658097]
- [7] Oliver G, Jaldin L, Campubí E, Cortés G. Observational Study of Total Knee Arthroplasty in Aseptic Revision Surgery: Clinical Results. *Orthop Surg* 2020; 12(1): 177-83. [<http://dx.doi.org/10.1111/os.12593>] [PMID: 31916370]
- [8] Lachiewicz PF, Watters TS, Jacobs JJ. Metal Hypersensitivity and Total Knee Arthroplasty. *J Am Acad Orthop Surg* 2016; 24(2): 106-12. [<http://dx.doi.org/10.5435/JAAOS-D-14-00290>] [PMID: 26752739]
- [9] Lionberger DR, Samorajski J, Wilson CD, Rivera A. What role does metal allergy sensitization play in total knee arthroplasty revision? *J Exp Orthop* 2018; 5(1): 30. [<http://dx.doi.org/10.1186/s40634-018-0146-4>] [PMID: 30109436]
- [10] Anand A, McGlynn F, Jiranek W. Metal hypersensitivity: can it mimic infection? *J Arthroplasty* 2009; 24(5): 826.e25-8. [<http://dx.doi.org/10.1016/j.arth.2008.05.002>] [PMID: 18639432]
- [11] Carossino AM, Carulli C, Ciuffi S, et al. Hypersensitivity reactions to metal implants: laboratory options. *BMC Musculoskelet Disord* 2016; 17(1): 486. [<http://dx.doi.org/10.1186/s12891-016-1342-y>] [PMID: 27881114]
- [12] Puente Reyna AL, Fritz B, Schwiesau J, et al. Metal ion release barrier function and biotribological evaluation of a zirconium nitride multilayer coated knee implant under highly demanding activities wear simulation. *J Biomech* 2018; 79: 88-96. [<http://dx.doi.org/10.1016/j.jbiomech.2018.07.043>] [PMID: 30111498]
- [13] Nam D, Li K, Riegler V, Barrack RL. Patient-Reported Metal Allergy: A Risk Factor for Poor Outcomes After Total Joint Arthroplasty? *J Arthroplasty* 2016; 31(9): 1910-5. [<http://dx.doi.org/10.1016/j.arth.2016.02.016>] [PMID: 26965589]
- [14] Thakur RR, Ast MP, McGraw M, Bostrom MP, Rodriguez JA, Parks ML. Severe persistent synovitis after cobalt-chromium total knee arthroplasty requiring revision. *Orthopedics* 2013; 36(4): e520-4. [<http://dx.doi.org/10.3928/01477447-20130327-34>] [PMID: 23590796]
- [15] Caicedo MS, Solver E, Coleman L, Hallab NJ. Metal sensitivities among TJA patients with post-operative pain: indications for multi-metal LTT testing. *J Long Term Eff Med Implants* 2014; 24(1): 37-44. [<http://dx.doi.org/10.1615/JLongTermEffMedImplants.2014010261>] [PMID: 24941404]
- [16] Bercovy M, Goutallier D, Voisin MC, et al. Carbon-PGLA prostheses for ligament reconstruction. Experimental basis and short-term results in man. *Clin Orthop Relat Res* 1985; (196): 159-68.

- [PMID: 2986886]
- [17] Jager KJ, Tripepi G, Chesnaye NC, Dekker FW, Zoccali C, Stel VS. Where to look for the most frequent biases? *Nephrology (Carlton)* 2020; 25(6): 435-41.
[<http://dx.doi.org/10.1111/nep.13706>] [PMID: 32133725]
- [18] Tripepi G, Jager KJ, Dekker FW, Wanner C, Zoccali C. Bias in clinical research. *Kidney Int* 2008; 73(2): 148-53.
[<http://dx.doi.org/10.1038/sj.ki.5002648>] [PMID: 17978812]
- [19] Gehrke T, Alijanipour P, Parvizi J. The management of an infected total knee arthroplasty. *Bone Joint J* 2015; 97-B(10)(Suppl. A): 20-9.
[<http://dx.doi.org/10.1302/0301-620X.97B10.36475>] [PMID: 26430083]
- [20] Ajwani SH, Charalambous CP. Availability of Total Knee Arthroplasty Implants for Metal Hypersensitivity Patients. *Knee Surg Relat Res* 2016; 28(4): 312-8.
[<http://dx.doi.org/10.5792/ksrr.16.018>] [PMID: 27894179]
- [21] Gupta SK, Chu A, Ranawat AS, Slamini J, Ranawat CS. Osteolysis after total knee arthroplasty. *J Arthroplasty* 2007; 22(6): 787-99.
[<http://dx.doi.org/10.1016/j.arth.2007.05.041>] [PMID: 17826267]
- [22] Griffin WL, Scott RD, Dalury DF, Mahoney OM, Chiavetta JB, Odum SM. Modular insert exchange in knee arthroplasty for treatment of wear and osteolysis. *Clin Orthop Relat Res* 2007; 464(464): 132-7.
[<http://dx.doi.org/10.1097/BLO.0b013e31814d4d5b>] [PMID: 18062046]
- [23] Thienpont E. Titanium niobium nitride knee implants are not inferior to chrome cobalt components for primary total knee arthroplasty. *Arch Orthop Trauma Surg* 2015; 135(12): 1749-54.
[<http://dx.doi.org/10.1007/s00402-015-2320-9>] [PMID: 26318754]
- [24] Giurea A, Neuhaus HJ, Miehke R, *et al.* Early results of a new rotating hinge knee implant. *BioMed Res Int* 2014; 2014948520
[<http://dx.doi.org/10.1155/2014/948520>] [PMID: 25089279]
- [25] Grupp TM, Giurea A, Miehke RK, *et al.* Biotribology of a new bearing material combination in a rotating hinge knee articulation. *Acta Biomater* 2013; 9(6): 7054-63.
[<http://dx.doi.org/10.1016/j.actbio.2013.02.030>] [PMID: 23485855]
- [26] Pace N, Marinelli M, Spurio S. Technical and histologic analysis of a retrieved carbon fiber-reinforced poly-ether-ether-ketone composite alumina-bearing liner 28 months after implantation. *J Arthroplasty* 2008; 23(1): 151-5.
[<http://dx.doi.org/10.1016/j.arth.2006.07.012>] [PMID: 18165046]
- [27] Schierjott RA, Giurea A, Neuhaus H-J, *et al.* Analysis of Carbon Fiber Reinforced PEEK Hinge Mechanism Articulation Components in a Rotating Hinge Knee Design: A Comparison of In Vitro and Retrieval Findings. *BioMed Res Int* 2016; 20167032830
[<http://dx.doi.org/10.1155/2016/7032830>] [PMID: 28101512]

© 2020 Maale *et al.*

This is an open access article distributed under the terms of the Creative Commons Attribution 4.0 International Public License (CC-BY 4.0), a copy of which is available at: <https://creativecommons.org/licenses/by/4.0/legalcode>. This license permits unrestricted use, distribution, and reproduction in any medium, provided the original author and source are credited.